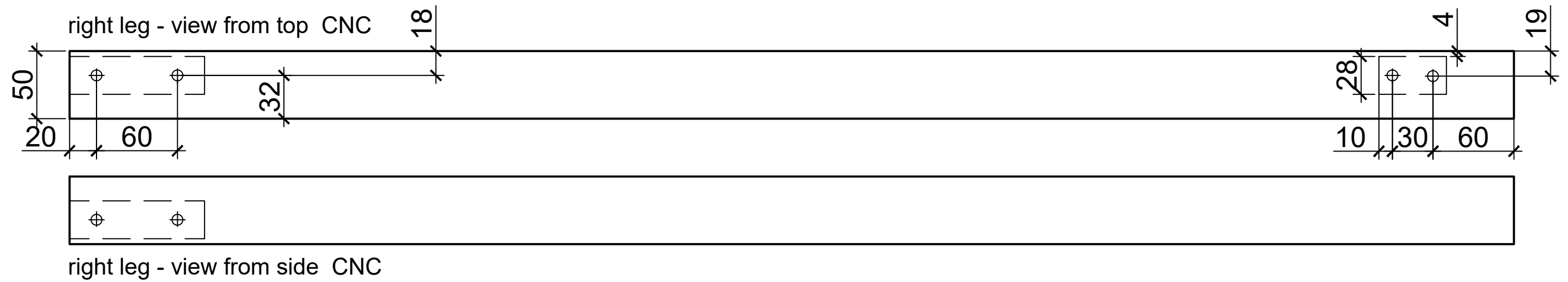


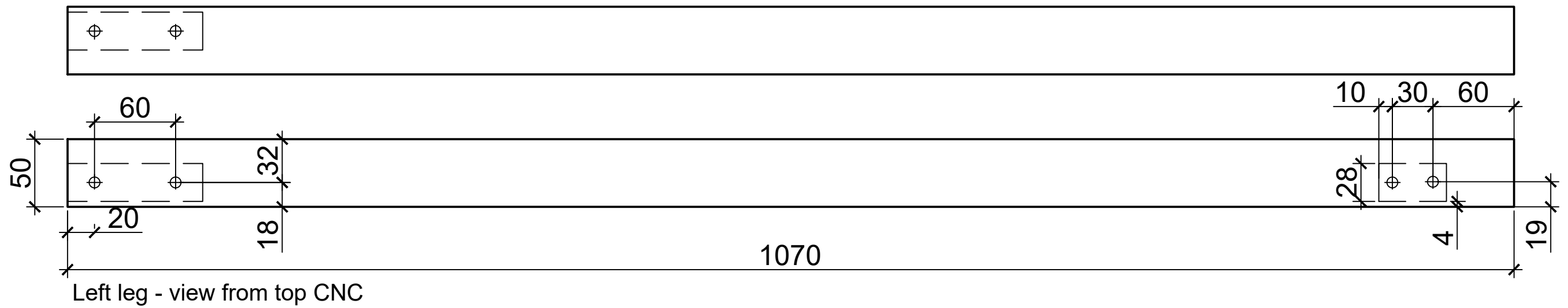
Linoleum glued on both sides of VP 9 mm. 2,5 mm + 9 mm = 14 mm

Team:	Erasmus+ Project: Standing desk in ash

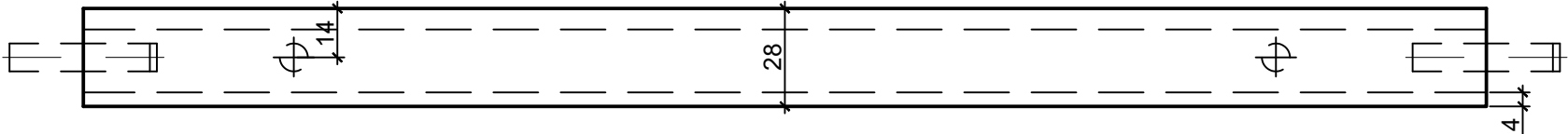
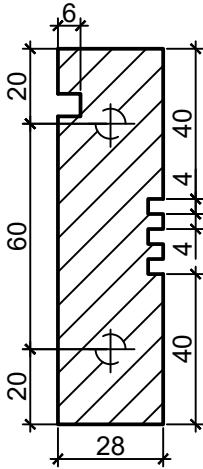
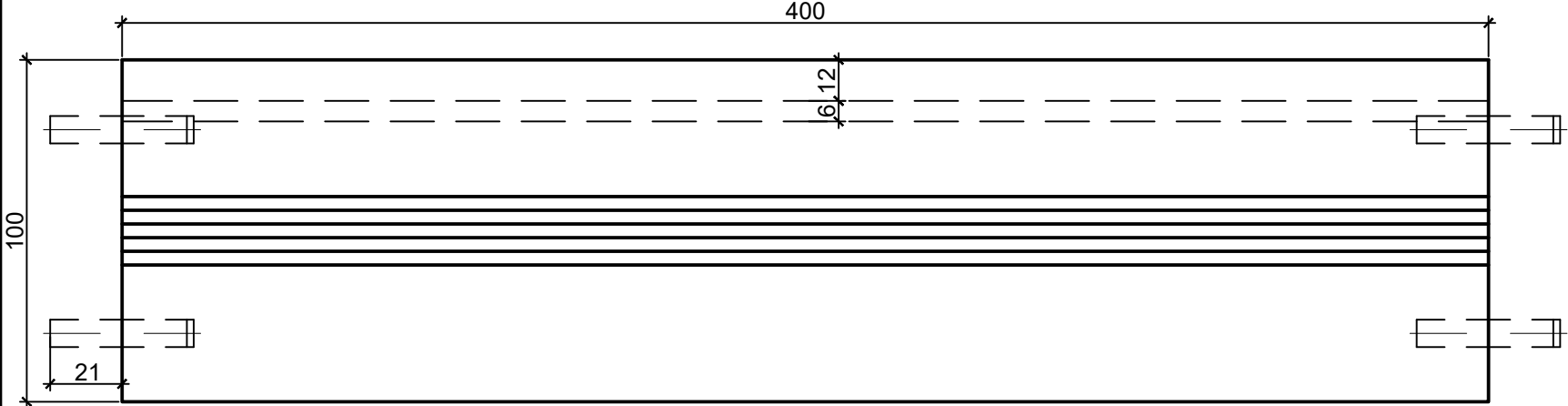
Table legs - standing desk in ash



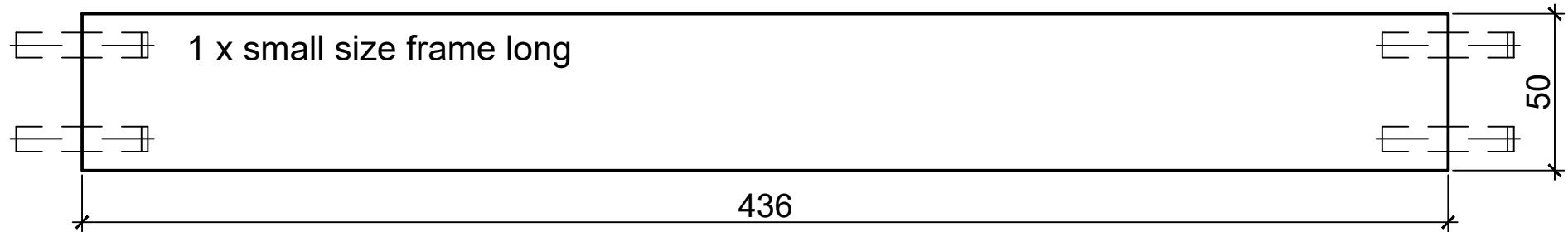
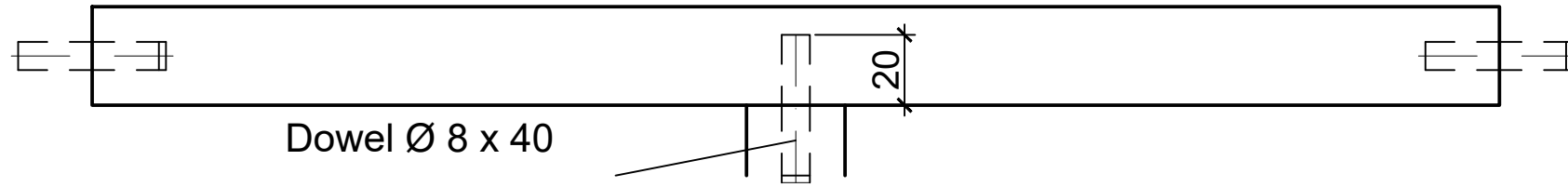
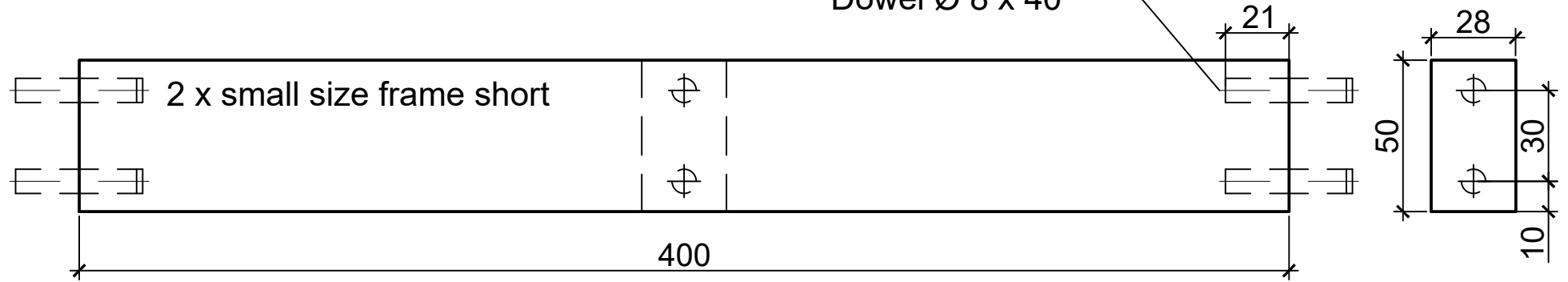
Left leg - view from side CNC

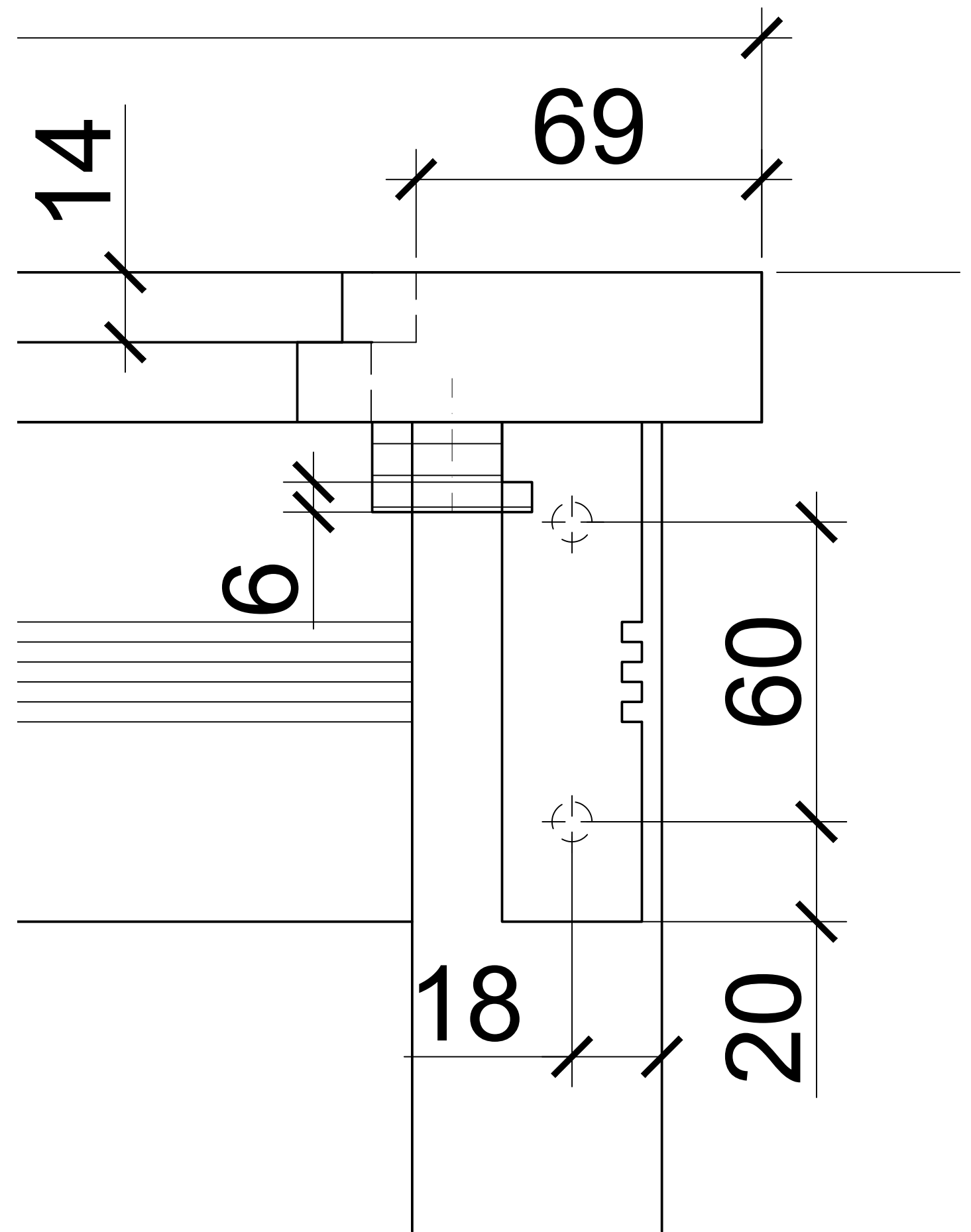
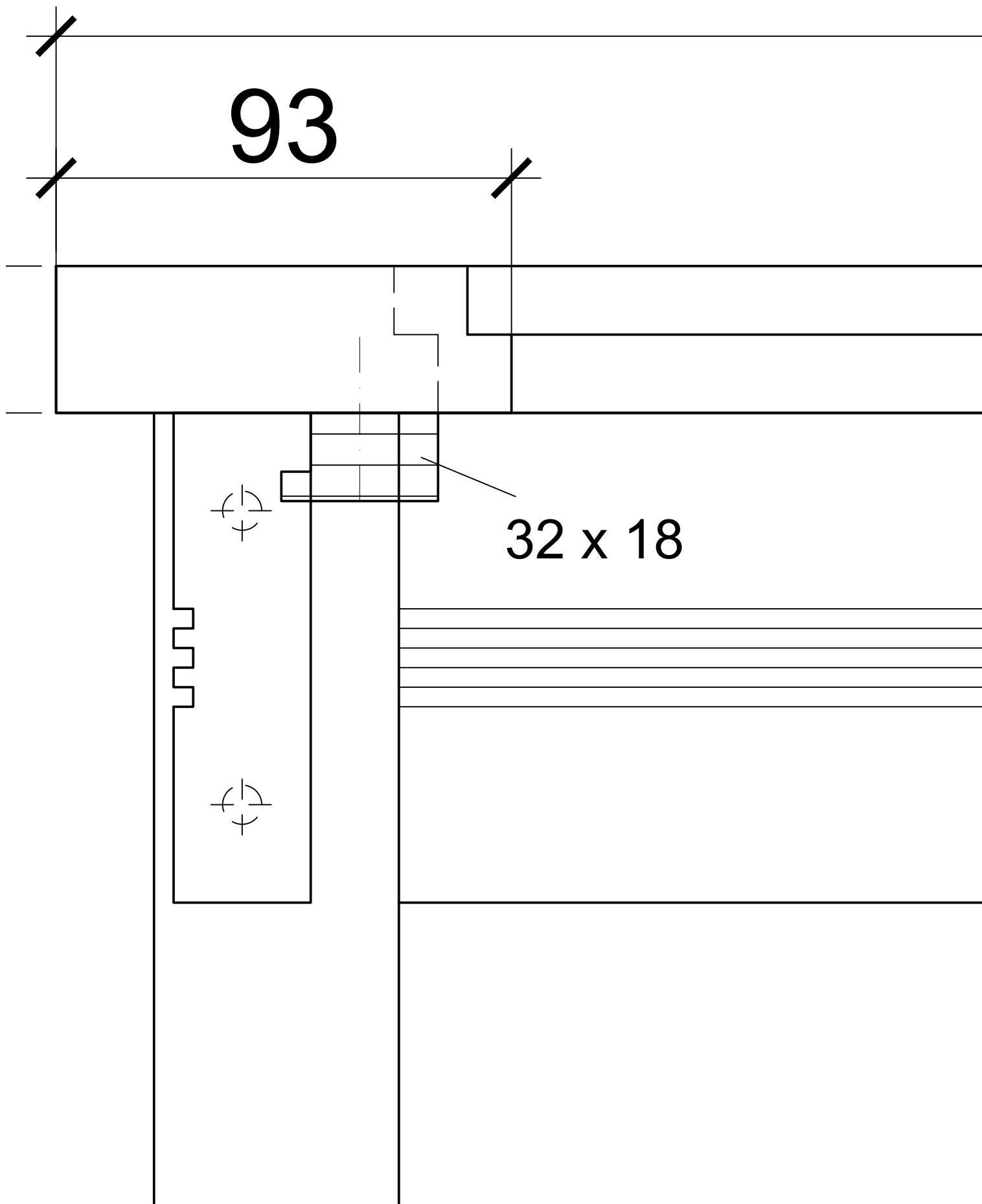


Frame wide



Dowel Ø 8 x 40







Co-funded by
the European Union

Erasmus+ Project : digitaljoiner.com

EPS Lübeck

Standing desk – material list

No.	Name	No of	length	width	thickness
1	Table legs	4	1070	50	50
2	Frame wide	4	400	100	28
3	Frame small	2	400	50	28
4	Steg	1	436	50	28
5	Top frame	4	540	93	30
6	VP Linoleum	1	402	402	13,6
7	Lamello No 20	4			
8	Dowel 8 x 40	30			
9	Groove wood	2	300	32	18